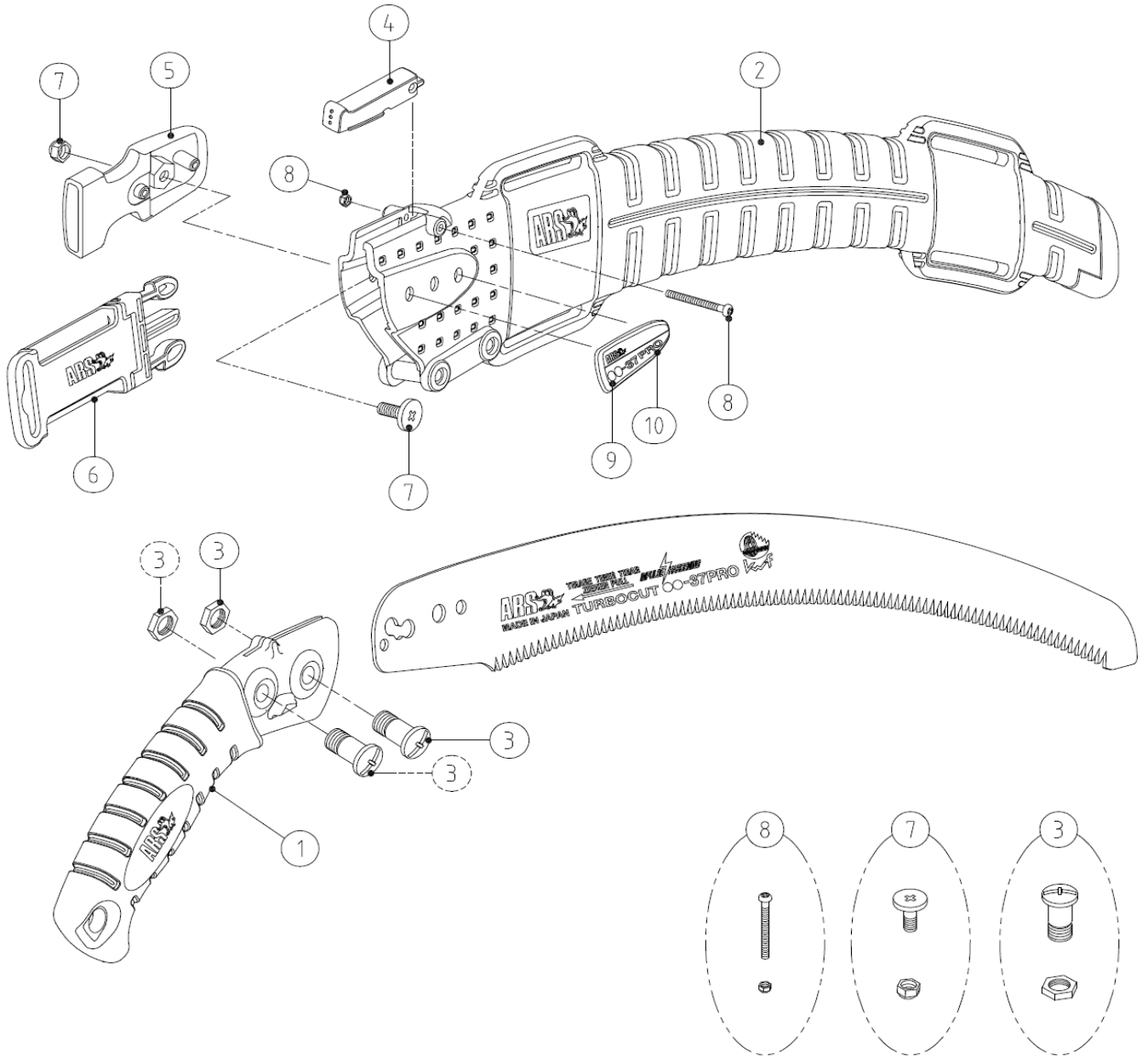


CT-37PRO / UV-37PRO



| PARTS NO. | SPECIFICATION  | PARTS NO. | SPECIFICATION |
|-----------|--|-----------|---------------|
| ①         | SP-427 GRIP FOR CT/UV-37PRO/42PRO  |           |               |
| ②         | SP-428 SHEATH FOR CT/UV-37PRO/42PRO<br>(W/O STOPPER,NAME PLATE OR BELT CLIP) |           |               |
| ③         | SP-359 BOLT & NUT FOR CAM/CT/UV/CTR/<br>UVR-PRO SERIES (1PC EACH)            |           |               |
| ④         | SP-372 STOPPER FOR CT/UV/CTR/UVR-32PRO/<br>37PRO/42PRO                       |           |               |
| ⑤         | SP-367 BELT CLIP FOR CAM/CT/UV/CTR/<br>UVR-PRO SERIES                        |           |               |
| ⑥         | SP-429 BELT FOR CAM/CT/UV/CTR/UVR-PRO SERIES                                 |           |               |
| ⑦         | SP-366 BOLT & NUT FOR THE BELT CLIP OF<br>CAM/CT/UV/CTR/UVR-PRO SERIES       |           |               |
| ⑧         | SP-373 BOLT & NUT FOR STOPPER OF CT/UV/CTR/<br>UVR-32PRO/-EXP/37PRO/42PRO    |           |               |
| ⑨         | SP-430 NAME PLATE FOR CT-37PRO   |           |               |
| ⑩         | SP-431 NAME PLATE FOR UV-37PRO   |           |               |